

TECHNOLOGY THAT ILLUMINATES THE FUTURE

PROLEKTRO®

PRODUCT CATALOGUE

www.prolektro.com.tr

ABOUT US

Our company has a quarter of a century experience in plastic welding sector, PLASTEK PVC İNŞ.SAN.TİC.LTD.ŞTİ was founded in 1993 by Mr. I. Metin Ersoy.

The company is engaged in the production and sale (in foreign and domestic market) of plastic electrodes, manual hot air welding machines and other repair equipment of the "PROLEKTRO" brand.

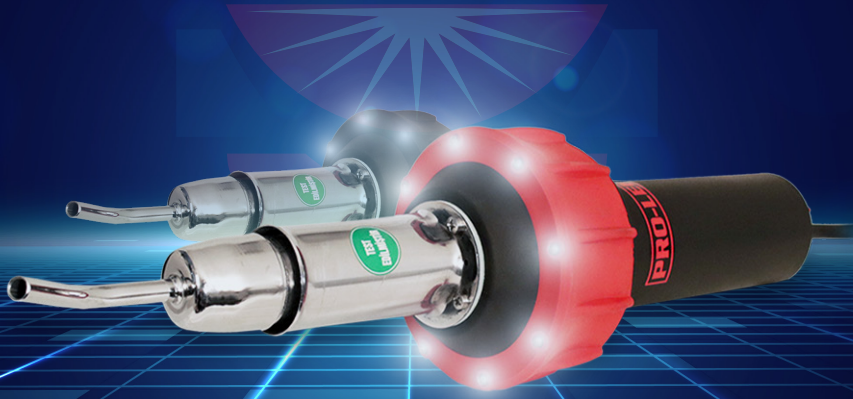
Our products are fully compatible with plastic parts from different manufacturers and meet all necessary standards in all around the globe.

Based on long-term work experience, the company has created a new business segment in the automotive and motorcycle plastic welding sector.

Our company is constantly developing its technology and development, conducting practical research work.



FIRST IN THE WORLD,
A REVOLUTION IN THE INDUSTRY



LIGHTED HOT AIR GUN

■ 01 Electrodes

1.1 P (PP) Group Black and White Electrodes	Pp. 05
1.2 S (ABS) Group Electrodes	Pp. 06
1.3 E (PE) Group Electrodes	Pp. 07
1.4 PA (PA) Group Electrodes	Pp. 08
1.5 POM (POM) Electrodes	Pp. 08
1.6 ASA Electrodes	Pp. 08

■ 02 Plastic Welding Machines

2.1 PRO-LEK 9000	Pp. 09
2.2 PRO-LEK 9001	Pp. 10
2.3 PRO-LEK 9000 Plus Light Machine	Pp. 11
2.4 PRO-LEK 9001 Plus Light Machine	Pp. 12

■ 03 Plastic Welding Repair Kits

3.1 PRO-LEK 9000 Plastic Welding Repair Kit	Pp. 13
3.2 PRO-LEK 9001 Plastic Welding Repair Kit	Pp. 14
3.3 PRO-LEK 9000 Plus Illuminated Plastic Welding Repair Kit	Pp. 15
3.4 PRO-LEK 9001 Plus Illuminated Plastic Welding Repair Kit	Pp. 16

■ 04 Hot Staple Plastic Repair Kits

4.1 Hot Staple Repair Kit (Black - Red)	Pp. 17
4.2 Hot Staple Repair Kit (Black - Black)	Pp. 18
4.3 Hot Staple Repair Kit (Red - Black)	Pp. 19
4.4 Hot Staple Repair Kit (Red - Red)	Pp. 20
4.5 Hot Staple Repair Kit (Green - Black)	Pp. 21

■ 05 Plastic Welding Stapler Elements

5.1 Plastic Welding Staples	Pp. 22
-----------------------------	--------

■ 06 Heating Elements

6.1 Resistance
6.2 Mica Tube

Pp. 23
Pp. 24

■ 07 Accessories Used for the Process

7.1 Nozzle (Tip)

Pp. 25

■ 08 Repair Auxiliary Products

8.1 Bumper Assistant (Tongs)
8.2 Magnetic Chassis Holder

Pp. 26
Pp. 27

■ 09 Adhesive Products

9.1 Plastic Surface Paste

Pp. 28

■ 10 Repair Accessories

10.1 PRO-LEK Multipurpose Tool Bag

Pp. 29

01 Electrodes

1.1 P (PP) Group Black and White Electrodes



Product Code	Group	Color	Width	Grams
PRP - 3001	PP	BLACK	THIN (7mm)	100 gr
PRP - 3002	PP	BLACK	WIDE (11mm)	100 gr
PRB - 4001	PP	WHITE	THIN (7mm)	100 gr
PRB - 4002	PP	WHITE	WIDE (11mm)	100 gr
PRYB-7000	PP	GREEN BEIGE	WIDE (11mm)	100gr
PRB-4003	PP	BLACK	THIN (7mm)	100gr

This plastic material used most commonly in automobiles. It is commonly used in the plastic parts of the vehicle's bumper, air filters, fibre front boards, front wall of the headlamp housing, center stack, door panels, radiators, auxiliary water chamber, fan shroud and sump guards.



While working with the PP electrode, appropriate temperature should be set with adjustable heat gun and welding Groove operation should be done absolutely as in other plastics and thin, and wide electrodes should be used respectively in the front and back surfaces. Cleaning and necessary processes should be carried out following the repair.

Welded tangent supports at appropriate distances starting and finishing points may provide better solutions.

01 Electrodes

1.2 S (ABS) Group Electrodes



Product Code	Group	Color	Width	Grams
PRS - 7001	ABS	BLACK	THIN (7mm)	100 gr
PRS - 7002	ABS	BLACK	WIDE (11mm)	100 gr
PRS-7003	ABS	BLACK	THIN (7mm)	100gr
PRS-7002-B	ABS	NATURAL	WIDE (11mm)	100gr
PRS-7001-B	ABS	NATURAL	THIN (7mm)	100gr

S (ABS) is a hard plastic commonly used on automobiles and motorcycles. **Bumper plastics of vehicles, mirrors, front grilles, rear stop brackets and motorcycle outer fairings are welded with S (ABS) electrode.**

Proper heat setting should be made on the heat gun. After the weld work is done, a single layer of welding should be made with a narrow welding electrode on the front surface of the product to be repaired, and it should be welded using a wide electrode on the back surface.



S (ABS)

Cooling process is required after the surface plane is provided at the end of welding of the hard plastic derivative S (ABS). As in other applications, leveling should be done at the end of the repair.

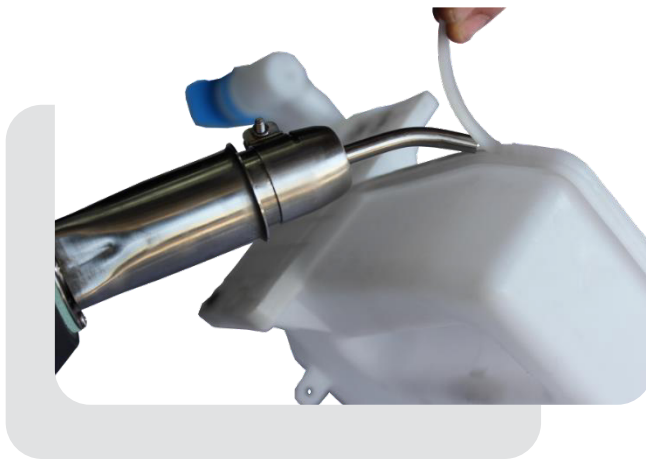
01 Electrodes

1.3 E (PE) Group Electrodes



Product Code	Group	Color	Width	Grams
PRP - 6001	PE	BLACK	THIN (7mm)	100 gr
PRP - 6002	PE	BLACK	WIDE (11mm)	100 gr
PRB - 6003	PE	WHITE	THIN (7mm)	100 gr
PRB - 6004	PE	WHITE	WIDE (11mm)	100 gr
PRE-6005	PE	BLUE	WIDE(11mm)	100gr

E (PE) is the welding electrode generally used in glass water tanks (white) and fuel tanks (black).



E (PE)

While working on the damaged product, after the heat is adjusted according to the wall thickness of the part to be repaired, welding mouth work should be done on the surface to be welded, then a single layer application should be made with a narrow welding electrode and a top layer welding application should be made with a wide electrode on it.

At the end of welding, it should not be cooled with air or water. (on its own It should cool down.) The open lids of the tanks are closed and the product is made ready for use by performing a tightness test with compressed air.

01 Electrodes

1.4. PA (PA) Group Electrodes



Product Code	Group	Color	Width	Grams
PRA - 5001	PA	BLACK	THIN (7mm)	70 gr
PRA - 5002	PA	BLACK	WIDE (11mm)	70 gr

PA (PA) is the most used plastic material under the hood. With this electrode; The intake manifold, water radiator reservoir, fiber-free front panel and plastic fenders are welded. When working with a PA (PA) electrode, weld bead application is mandatory.



WARNING: Welding should be done by holding the electrode at an angle of 100 degrees to the ground and the welding machine at an angle of 50 degrees. In all welding processes, heat should be applied to the electrode if the ground is thin, and more to the ground if it is thick.

1.5. POM (POM) Electrodes



Product Code	Group	Color	Width	Grams
PRA - 5001	PA	BLACK	THIN (7,5 mm)	100 gr

POM is produced in narrow size only.

Generally; It is used in wiper arms, signal arms, automatic gear mechanism plastic, bumper bracket feet, tank float plastic and water sprinkler engine plastic.

Warning; It should be welded with approx. 400°.

1.6. ASA Electrodes



Product Code	Group	Color	Width	Grams
PRA - 8002	ASA	BLACK	THIN (7,5 mm)	100 gr

ASA Electrode is produced only in black and narrow. Generally; It is used in Shutters, Mirrors, Fog Lamps, Motorcycle Fairings, Bumper Brackets and Wiper Arms. Note: Action should be taken by considering the codes on the plastic parts of the products to be welded.

■ 02 Plastic Welding Machines

2.1 PRO-LEK 9000

Technical Specifications

Voltage	:220-230 V
Strength	:1650 W
Frequency	:50/60 HZ
Heat	:40-700 °C
Air Flow	:13-13.8m/s
Air Pressure	:3000 Pa
Noise Level	:75 dB
Power Cable Length	:3m
Weight (Excluding power cable)	:975g



Our PRO-LEK 9000 series device is adjusted for hot air from 40 °C to 700 °C. Airflow is constant. There is a 1550 WATT resistance in the heater part. The total machine is 1650 WATT. It works from the On-Off button. Temperature adjustment is made from the red rotary potentiometer with a numerator. The resistance change should be with 1550 WATT resistance. If a different resistance is installed, it will cause a malfunction in the device. It is guaranteed for two years except for the resistance and mica tube.



Before operating the plastic welding machine, care should be taken that the heater is in the $\geq 0 \leq$ position. At the end of use, bring the device to the cooling level and you cool down. Unplug the device and clean the dust filter at the back with compressed air without moisture.

■ 02 Plastic Welding Machines

2.2 PRO-LEK 9001

Technical Specifications

Voltage	:220-230 V
Strength	:1000 W
Frequency	:50/60 HZ
Heat	:250-700 °C
Air Flow	:9-13.8m/s
Air Pressure	:3000 Pa
Noise Level	:75 dB
Power Cable Length	:3m
Weight (Excluding power cable)	:975g



Our PRO-LEK 9001 series device has variable air blowing and temperature adjustment from 250 degrees to 700 degrees. There is a 900 watt resistance in the heater part. The total machine is 1000 watts. It turns the resistance on and off from the on-off button. The red dial, which has a numerator, turns on and off the pot, the same button also changes the heat and wind settings. Changing the resistor should be with a 900 watt resistor. If a different resistor is installed, it will cause a malfunction in the device. It is guaranteed for two years except for the resistance and mica tube.



Before operating the plastic welding machine, care should be taken that the heater is in the $\geq 0 \leq$ position. At the end of use, bring the device to the cooling level and cool. Unplug the device and clean the dust filter on the side with compressed air without moisture.

■ 02 Plastic Welding Machines

2.3 PRO-LEK 9000 Plus Light Machine

Technical Specifications

Voltage	:220-230 V
Strength	:1650 W
Frequency	:50/60 HZ
Heat	:40-700 °C
Air Flow	:13-13.8m/s
Air Pressure	:3000 Pa
Noise Level	:75 dB
Power Cable Length	:3m
Weight (Excluding power cable)	:975g



With the Prolek 9000 Plus Illuminated Machine, it helps you to perform the welding process more precisely thanks to its 8 "led light" functions in dark areas and in areas where light is insufficient. Airflow is constant. There is a 1550 watt resistance in the heater part. The total machine is 1650 Watts. It works from the on-off button. Temperature adjustment is made with a red dial potentiometer with a numerator. The resistance change should be with 1550 watt resistance. If a faulty 900 watt resistor is installed, the temperature is low; remains below the desired values.



OUR PROLEK-9000 PLUS LIGHTING MACHINE DEVICE IS GUARANTEED FOR TWO YEARS EXCLUDING RESISTANCE AND MICA TUBE.

■ 02 Plastic Welding Machines

2.4 PRO-LEK 9001 Plus Light Machine

Technical Specifications

Voltage	:220-230 V
Strength	:1000 W
Frequency	:50/60 HZ
Heat	:2500-700 °C
Air Flow	:9-13.8m/s
Air Pressure	:3000 Pa
Noise Level	:75 dB
Power Cable Length	:3m
Weight (Excluding power cable)	:975g



With the Prolek 9001 Plus Light Machine, it helps you to perform the welding process more precisely, thanks to its 8 “led light” functions in dark and insufficient light areas.

Our device has variable air blowing and temperature adjustment from 250 degrees to 700 degrees. There is a 900 watt resistance in the heater part. The total machine is 1000 watts. It turns the resistance on and off from the on-off button. The red dial, which has a numerator, turns on and off the pot, the same button also changes the heat and wind settings.

Resistance change should be with 900 watt resistance. If a different resistance is installed, it will cause a malfunction in the device.



■ 03 Plastic Welding Repair Kits

3.1 PRO-LEK 9000 Plastic Welding Repair Kit

Box Contents

- 1 x 9000 series Plastic Welding Machine
- 20 packs of Electrodes
- 1 x 5,5mm~6,0mm Nozzle (Tip)
- 1 Water Fountain

Types and sizes of 20 pack electrodes included in the set are listed below.



It has a two-year warranty except the resistor and mica tube.

Electrode Types and Sizes in the Set

Product Name	Length (mm)	Width (mm)	Number of Packages	Package Weight (gr)
P THIN	430 mm	7 mm	2	100 gr
P WIDE	430 mm	11 mm	2	100 gr
P WHITE THIN	430 mm	7 mm	2	100 gr
P WHITE WIDE	430 mm	11 mm	2	100 gr
PA THIN	430 mm	7 mm	2	100 gr
PA WIDE	430 mm	11 mm	2	100 gr
S WIDE	430 mm	11 mm	2	100 gr
S THIN	430 mm	7 mm	2	100 gr
E WHITE THIN	430 mm	7 mm	1	100 gr
E WHITE WIDE	430 mm	11 mm	1	100 gr
E BLACK THIN	430 mm	7 mm	1	100 gr
E BLACK WIDE	430 mm	11 mm	1	100 gr

There are a total of 20 packs of electrodes in the set.

■ 03 Plastic Welding Repair Kits

3.1 PRO-LEK 9001 Plastic Welding Repair Kit

Box Contents

- 1 x 9001 series Plastic Welding Machine
- 20 packs of Electrodes
- 1 x 5.5mm~6.0mm Nozzle (Tip)
- 1 Water Fountain

Types and sizes of 20 pack electrodes included in the set are listed below.



It has a two-year warranty except the resistor and mica tube.

Electrode Types and Sizes in the Set

Product Name	Length (mm)	Width (mm)	Number of Packages	Package Weight (gr)
P THIN	430 mm	7 mm	2	100 gr
P WIDE	430 mm	11 mm	2	100 gr
P WHITE THIN	430 mm	7 mm	2	100 gr
P WHITE WIDE	430 mm	11 mm	2	100 gr
PA THIN	430 mm	7 mm	2	100 gr
PA WIDE	430 mm	11 mm	2	100 gr
S WIDE	430 mm	11 mm	2	100 gr
S THIN	430 mm	7 mm	2	100 gr
E WHITE THIN	430 mm	7 mm	1	100 gr
E WHITE WIDE	430 mm	11 mm	1	100 gr
E BLACK THIN	430 mm	7 mm	1	100 gr
E BLACK WIDE	430 mm	11 mm	1	100 gr

There are a total of 20 packs of electrodes in the set.

■ 03 Plastic Welding Repair Kits

3.2 PRO-LEK 9000 Plus Illuminated Plastic Repair

Box Contents

- 1 adet 9000 series Lighted Plastic Welding Machine
- 20 packs of Electrodes
- 1 x 5.5mm~6.0mm Nozzle (Tip)
- 1 Water Fountain

Types and sizes of 20 pack electrodes included in the set are listed below.



Please see the technical specifications and product descriptions of the 9000 series device included in the PRO-LEK 9000 Plus Light Machine on page 11.

It is guaranteed for two years except for the resistance and mica tube.

Electrode Types and Sizes in the Set

Product Name	Length (mm)	Width (mm)	Number of Packages	Package Weight (gr)
P THIN	430 mm	7 mm	2	100 gr
P WIDE	430 mm	11 mm	2	100 gr
P WHITE THIN	430 mm	7 mm	2	100 gr
P WHITE WIDE	430 mm	11 mm	2	100 gr
PA THIN	430 mm	7 mm	2	100 gr
PA WIDE	430 mm	11 mm	2	100 gr
S WIDE	430 mm	11 mm	2	100 gr
S THIN	430 mm	7 mm	2	100 gr
E WHITE THIN	430 mm	7 mm	1	100 gr
E WHITE WIDE	430 mm	11 mm	1	100 gr
E BLACK THIN	430 mm	7 mm	1	100 gr
E BLACK WIDE	430 mm	11 mm	1	100 gr

There are a total of 20 packs of electrodes in the set.

■ 03 Plastic Welding Repair Kits

3.3 PRO-LEK 9001 Plus Illuminated Plastic Repair

Box Contents

- 1 x 9001 series Lighted Plastic Welding Machine
- 20 packs of Electrodes
- 1 x 5.5mm~6.0mm Nozzle (Tip)
- 1 Water Fountain

Types and sizes of 20 pack electrodes included in the set are listed below.



Please see the technical specifications and product descriptions of the 9001 series device included in the PRO-LEK 9001 Plus Light Machine on page 12. It is guaranteed for two years except for the resistance and mica tube.

Electrode Types and Sizes in the Set

Product Name	Length (mm)	Width (mm)	Number of Packages	Package Weight (gr)
P THIN	430 mm	7 mm	2	100 gr
P WIDE	430 mm	11 mm	2	100 gr
P WHITE THIN	430 mm	7 mm	2	100 gr
P WHITE WIDE	430 mm	11 mm	2	100 gr
PA THIN	430 mm	7 mm	2	100 gr
PA WIDE	430 mm	11 mm	2	100 gr
S WIDE	430 mm	11 mm	2	100 gr
S THIN	430 mm	7 mm	2	100 gr
E WHITE THIN	430 mm	7 mm	1	100 gr
E WHITE WIDE	430 mm	11 mm	1	100 gr
E BLACK THIN	430 mm	7 mm	1	100 gr
E BLACK WIDE	430 mm	11 mm	1	100 gr

There are a total of 20 packs of electrodes in the set.

■ 04 Hot Staple Plastic Repair Kits

4.1 Hot Staple Repair Kit (Black - Red)

Box Contents

- 100 W Hot Staple Plastic Repairing Machine
- 50 Pieces 0.8mm Wavy Type Plastic Welding Staples
- 50 Pieces 0.8mm Straight Type Wavy Plastic Welding Staples
- 50 Pieces 0.8mm Outer Corner Plastic Welding Staples
- 50 Pieces 0.8mm V Type Plastic Welding Staples
- 1 User Manual



Product Code: SZM-1004

Prolektro 100 W Hot Stapler Plastic Repair Machine is 100% domestic production. You can easily repair plastic parts with the Hot Staple Plastic Repair Gun, which is suitable for professional use. It heats up quickly and provides an easy grip with its ergonomic design. It provides ease of working in dark environments with its LED light.



■ 04 Hot Staple Plastic Repair Kits

4.2 Hot Staple Repair Kit (Black - Black)

Box Contents

- 100 W Hot Staple Plastic Repairing Machine
- 50 Pieces 0.8mm Wavy Type Plastic Welding Staples
- 50 Pieces 0.8mm Straight Type Wavy Plastic Welding Staples
- 50 Pieces 0.8mm Outer Corner Plastic Welding Staples
- 50 Pieces 0.8mm V Type Plastic Welding Staples
- 1 User Manual



Product Code: SZM-1003

Prolektro 100 W Hot Stapler Plastic Repair Machine is 100% domestic production. You can easily repair plastic parts with the Hot Staple Plastic Repair Gun, which is suitable for professional use. It heats up quickly and provides an easy grip with its ergonomic design. It provides ease of working in dark environments with its LED light.



■ 04 Hot Staple Plastic Repair Kits

4.3 Hot Staple Repair Kit (Red - Black)

Box Contents

- 100 W Hot Staple Plastic Repairing Machine
- 50 Pieces 0.8mm Wavy Type Plastic Welding Staples
- 50 Pieces 0.8mm Straight Type Wavy Plastic Welding Staples
- 50 Pieces 0.8mm Outer Corner Plastic Welding Staples
- 50 Pieces 0.8mm V Type Plastic Welding Staples
- 1 User Manual



Product Code: SZM-1002

Prolektro 100 W Hot Stapler Plastic Repair Machine is 100% domestic production. You can easily repair plastic parts with the Hot Staple Plastic Repair Gun, which is suitable for professional use. It heats up quickly and provides an easy grip with its ergonomic design. It provides ease of working in dark environments with its LED light.



■ 04 Hot Staple Plastic Repair Kits

4.4 Hot Staple Repair Kit (Red - Red)

Box Contents

- 100 W Hot Staple Plastic Repairing Machine
- 50 Pieces 0.8mm Wavy Type Plastic Welding Staples
- 50 Pieces 0.8mm Straight Type Wavy Plastic Welding Staples
- 50 Pieces 0.8mm Outer Corner Plastic Welding Staples
- 50 Pieces 0.8mm V Type Plastic Welding Staples
- 1 User Manual



Product Code: SZM-1001

Prolektro 100 W Hot Stapler Plastic Repair Machine is 100% domestic production. You can easily repair plastic parts with the Hot Staple Plastic Repair Gun, which is suitable for professional use. It heats up quickly and provides an easy grip with its ergonomic design. It provides ease of working in dark environments with its LED light.



■ 04 Hot Staple Plastic Repair Kits

4.5 Hot Staple Repair Kit (Green - Black)

Box Contents

- 100 W Hot Staple Plastic Repairing Machine
- 50 Pieces 0.8mm Wavy Type Plastic Welding Staples
- 50 Pieces 0.8mm Straight Type Wavy Plastic Welding Staples
- 50 Pieces 0.8mm Outer Corner Plastic Welding Staples
- 50 Pieces 0.8mm V Type Plastic Welding Staples
- 1 User Manual







Product Code: SZM-1005

Prolektro 100 W Hot Stapler Plastic Repair Machine is 100% domestic production. You can easily repair plastic parts with the Hot Staple Plastic Repair Gun, which is suitable for professional use. It heats up quickly and provides an easy grip with its ergonomic design. It provides ease of working in dark environments with its LED light.



■ 05 Plastic Welding Stapler Elements

5.1 Plastic Welding Staples

Product Code	Product	Width	Product Type
SZT-2019		0,8 MM	OUTER CORNER M TYPE
SZT-3014		0,8 MM	WAVY STRAIGHT TYPE
SZT-1015		0,8 MM	WAVY S TYPE
SZT-4017		0,8 MM	V TYPE

Our products are domestic production.

Our products are 100% steel, stainless.

■ 06 Heating Elements

6.1 Resistance


Product Code	Product	Watt	Volt
PRR-B1550		1550 W	230 V
PRR-B900		900 W	230 V

Ceramic resistance is used in our devices.

The resistors are plug and socket.

■ 06 Heating Elements


6.2 Mica Tube

Product Code	Product
PRM-T001	 Three cylindrical mica tubes, light brown in color, arranged in a cluster. They appear to be made of a porous material and are likely used as insulation or spacers in heating elements.

Mica tube is an element that reduces the resistance of the resistance and reduces the heat transfer to the chrome tube outside.

■ 07 Accessories Used for the Process

7.1 Nozzle (Tip)

Product Code	Product	Size
PRN-8001		5,5 mm 6,0 mm

Nozzle (Tip) approved by our company to be used in plastic repair has an inner diameter of 5.5 mm ~ 6.0 mm. Before starting the welding machine, the bolt and nut on the nozzle should be loosened and tightened after it is fully inserted.

■ 08 Repair Auxiliary Products

8.1 Bumper Assistants

Product Code	Product
TMP-A001	

The bumper assistant is the equipment that allows you to make repairs without the need for another assistant by bringing the ends of the broken area to equal height during welding. Made from a light and durable metal.

■ 08 Onarım Yardımcı Ürünleri

8.2 Magnetic Chassis Holder

Product Code	Product
MST-3614	 A green magnetic chassis holder with a black handle. It features a green base with a circular opening, a green plate with a hole, and a black handle with a silver-colored metal tip. A small metal component is attached to the handle tip.

Thanks to its composite body, it is resistant to temperatures up to 390 °C and high impacts. Its structure consists of 58 conductive copper cathodes, chrome bolts, nuts and tin-plated copper cable ends. It has a 10 mm or 14 mm pass-through cable lug connection.

100% DOMESTIC PRODUCTION

■ 09 Adhesive Products

9.1 Plastic Surface Putty

It is a two-component polyester filling material that adheres perfectly to plastic bumpers except PE (Polyethylene).

Before starting the application, wipe with a microfiber cloth and degrease the surface using Antisil 770 (Normal) or Antisil 771 (Quick).

The p120-p180 sandpaper has the ability to dry easily with sandpaper, so you can obtain a non-porous surface.

Sand does not coagulate with sandpaper. It provides excellent mechanical resistance due to its highly elastic structure.

980g + 20g



PRC-M001

■ 10 Repair Accessories

10.1 Pro-lek Multipurpose Toolbag

It is made of "(PP) Polypropylene" material that is resistant to breaks and impacts.

Due to its structure, it is a product that helps organize the environment without taking up much space. This product, which will help you in your works such as mechanical, electrical and vehicle repair, is suitable for storing and carrying all kinds of small hand tools.

Product Sizes;

Length - 500mm

Width - 350mm

Height - 110mm

Weight - 1200gr



PLS-2500



PROLEKTRO®

— CONTACT —

✉ info@prolektro.com.tr

☎ +90 (530) 581 37 37

📍 Kazımdirik Neighborhood Üniversite Road
.No:110 Floor:2 Börnova/İzmir

www.prolektro.com.tr